
Institute for Cyber Security

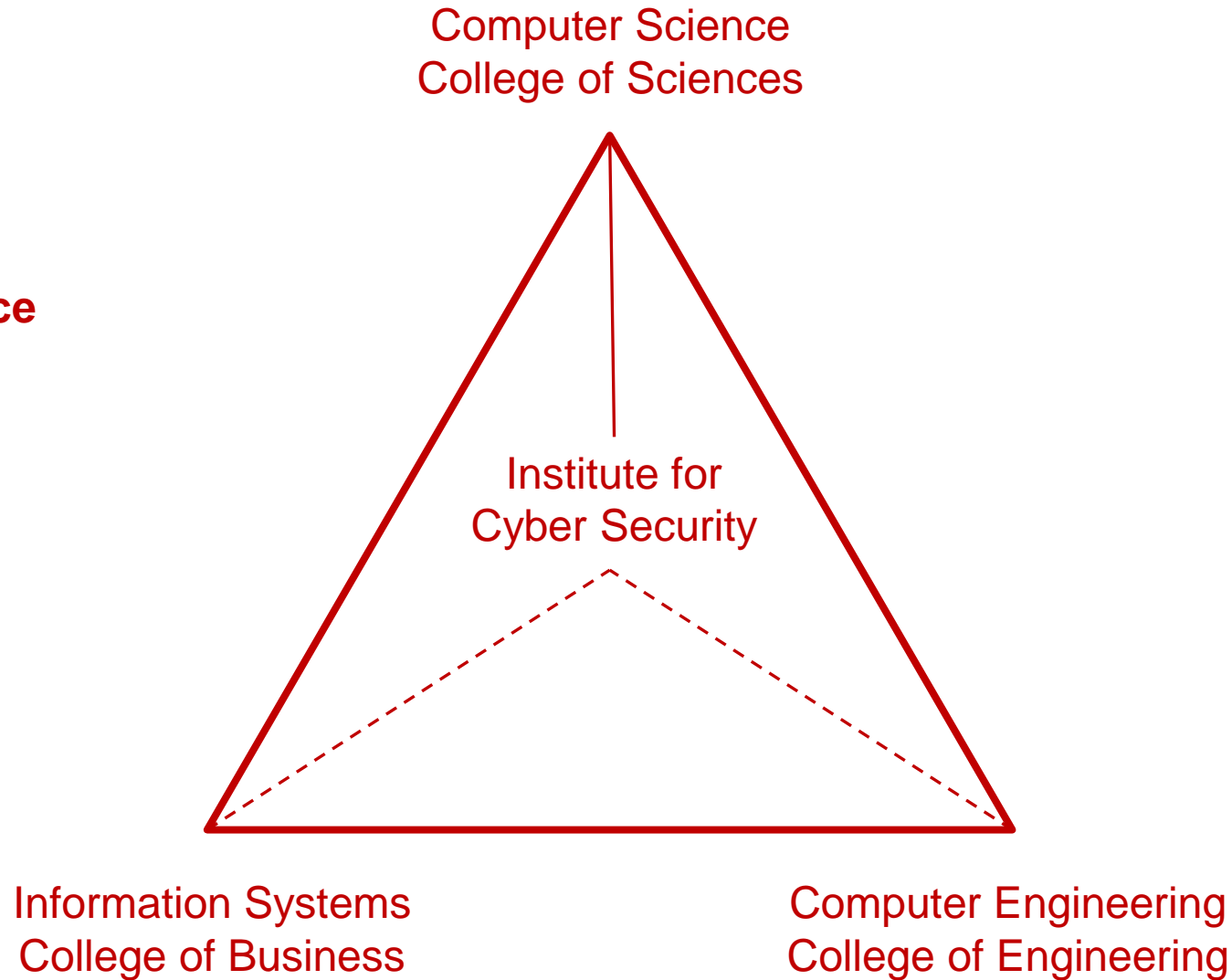
Prof. Ravi Sandhu
Executive Director and Endowed Chair

February 4, 2015

ravi.sandhu@utsa.edu
www.profsandhu.com
www.ics.utsa.edu

Hallmarks

- **Diversity**
- **Maturity**
- **Excellence**



➤ Diversity

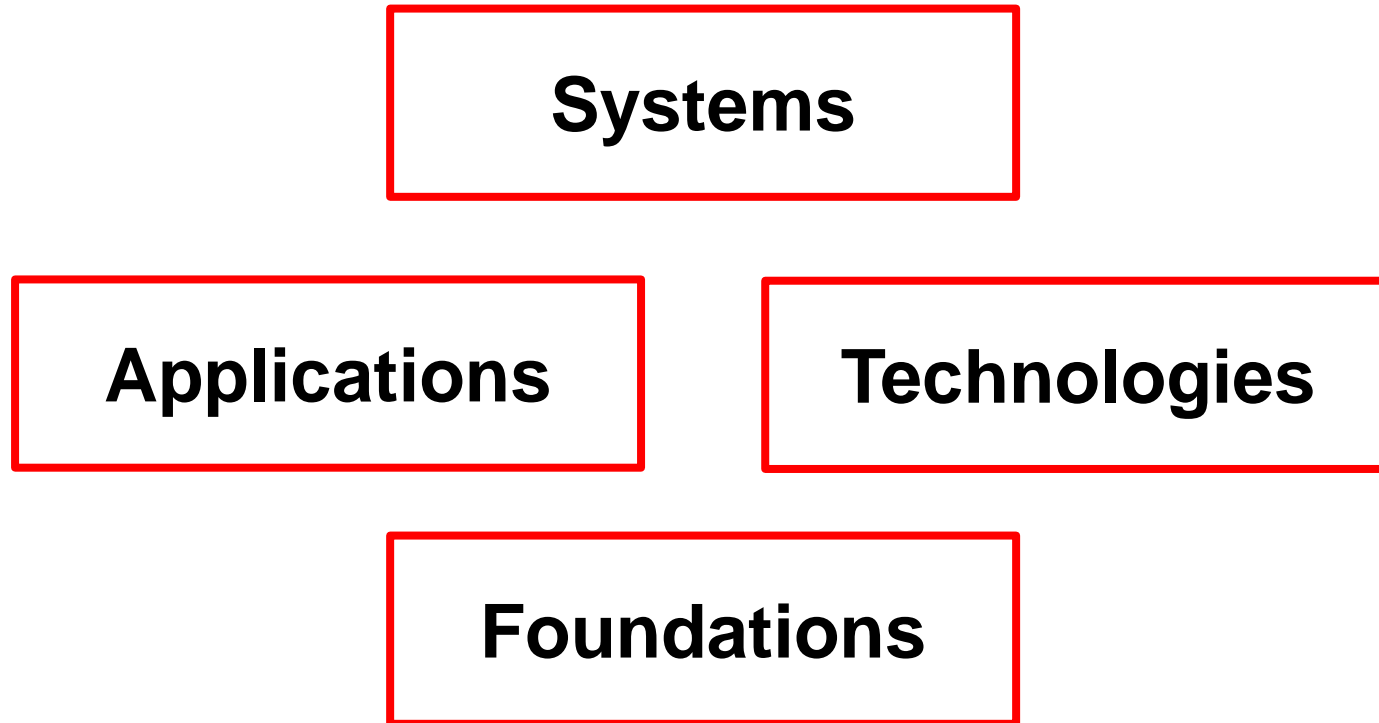
- ❖ 3 Departments across 3 Colleges
- ❖ Core security faculty plus numerous collaborators
- ❖ World class labs: FlexCloud, FlexFarm
- ❖ Research, Education, Workforce development, Cyber competitions
- ❖ Hispanic minority serving institution

➤ Maturity

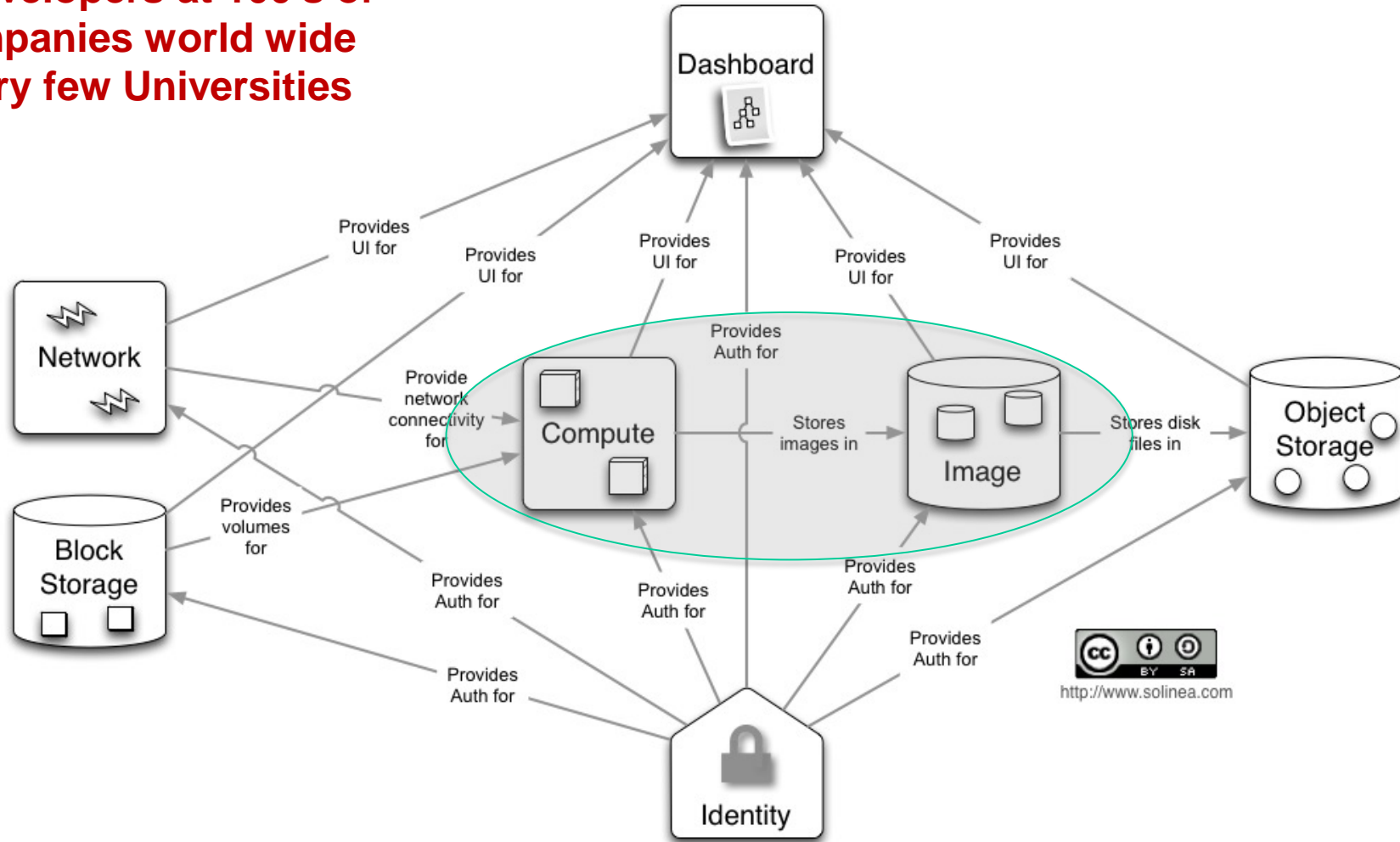
- ❖ Major and sustained push in cyber security since 2000
- ❖ Established degrees and concentrations
- ❖ NSA CAE for Education and for Research

➤ Excellence

- ❖ Rated number 1 in the country by a HP sponsored study in 2013
- ❖ Creating first BS degree in Cyber Security in USA to be offered by a research intensive CS Department
- ❖ Effectively a dual major in CS and Cyber Security
- ❖ Excellent placement record for students at all levels



- **Developers at 100's of companies world wide**
- **Very few Universities**



**Human
Driven**



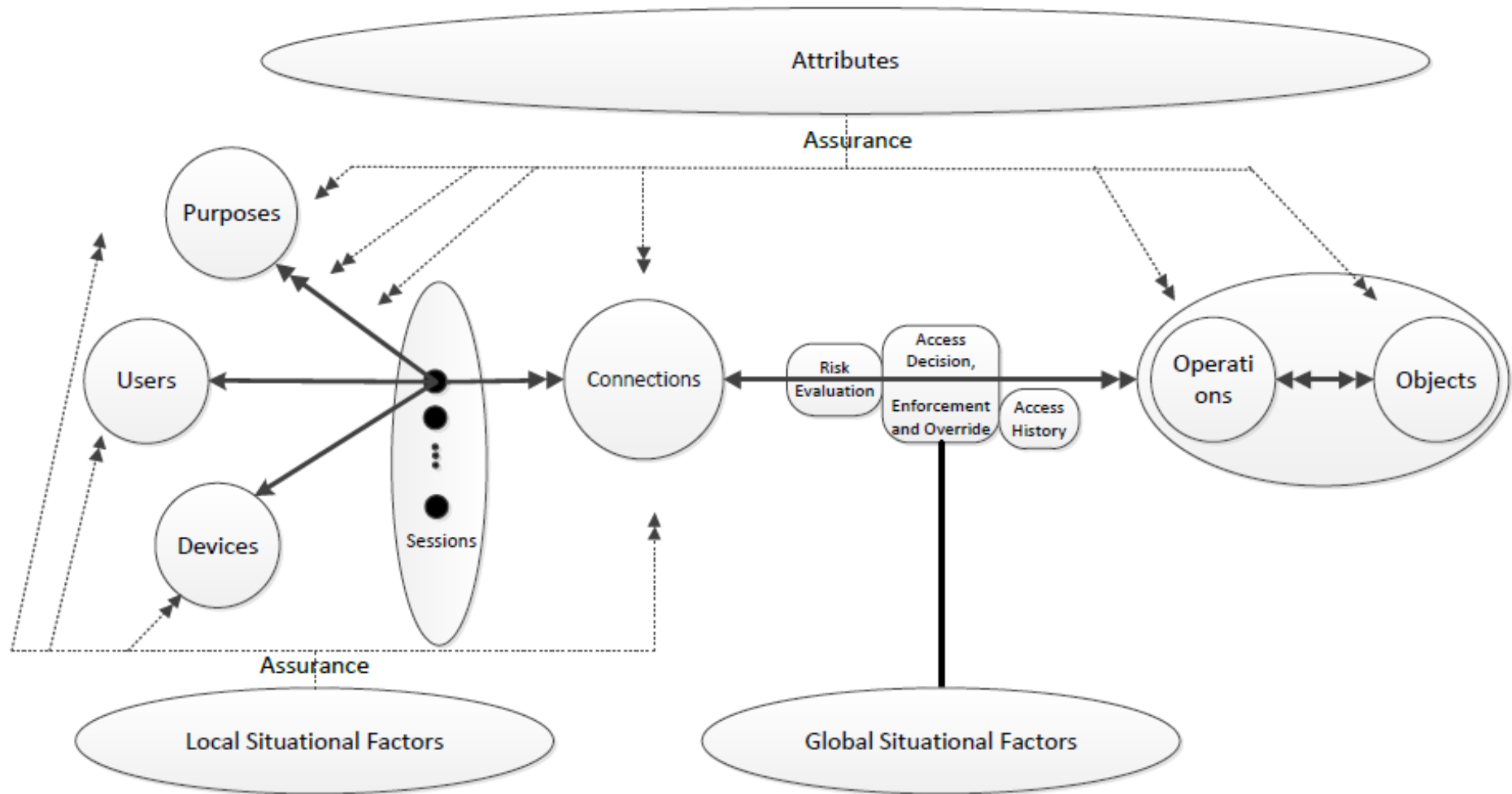
**Discretionary Access Control
(DAC), 1970**

**Mandatory Access Control
(MAC), 1970**

**Role Based Access Control
(RBAC), 1995**

**Attribute Based Access Control
(ABAC), ????**

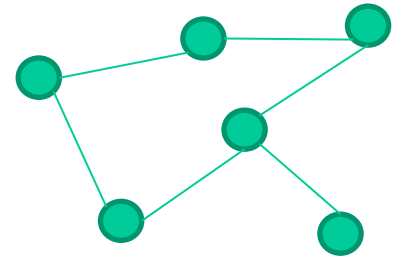
**Automated
Adaptive**



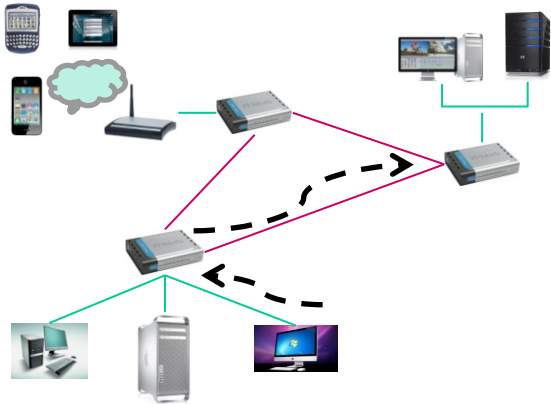
Access and Usage Control
of Data and its Provenance



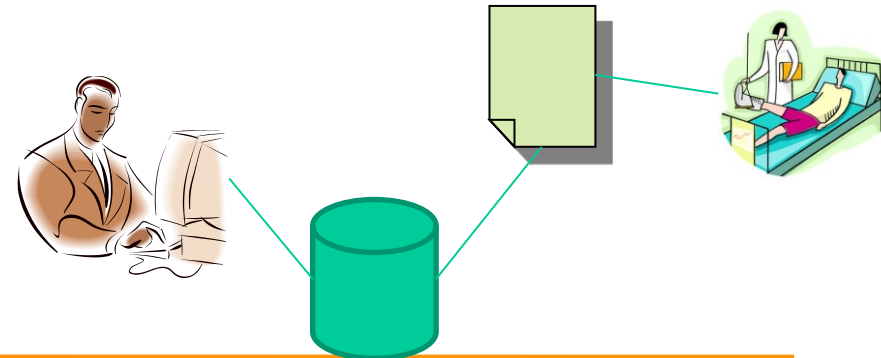
Data Trustworthiness
(e.g., sensor networks)



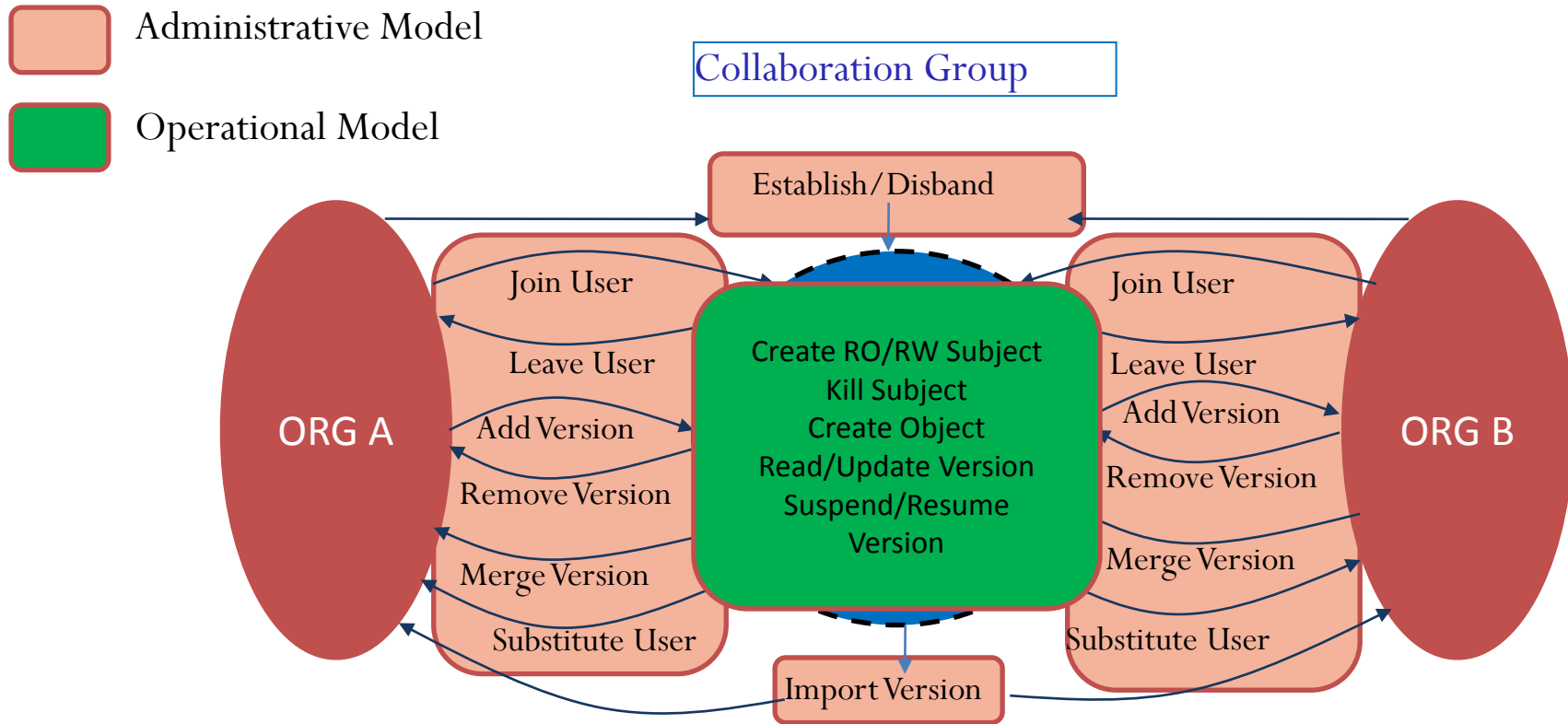
Data Forensics
(e.g., SIM tools)



Data Privacy
(e.g., track hospital records)



etcetera



- Social network and social computing security
- Integrated models for access control, compliance and forensics
- Smart grid security
- Malware models and analysis
- Botnet detection and mitigation
-