

Figure 1
4 Layer Framework for Security Engineering

What?



Policy
Model
Architecture
Mechanism

How?

1

Figure 2
4 Layer Framework for Multilevel Security

What?

Multilevel Security



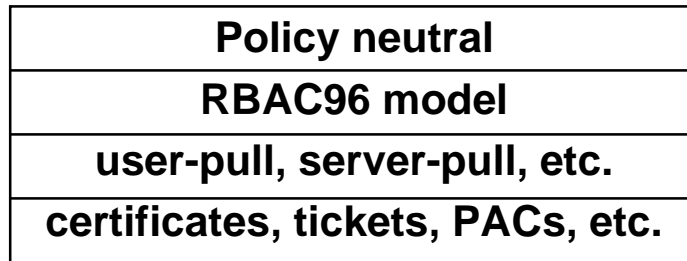
No information leakage
Lattices (Bell-LaPadula)
Security kernel
Security labels

How?

2

Figure 3
4 Layer Framework for RBAC

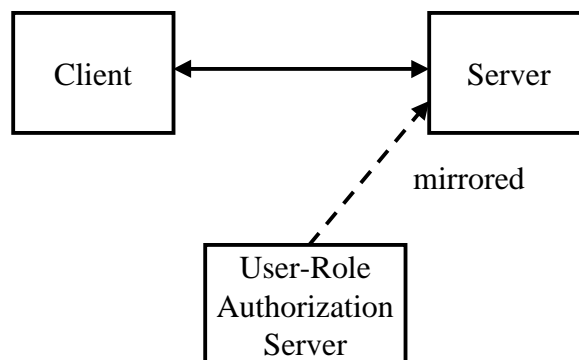
What? **Role-Based Access Control (RBAC)**



How?

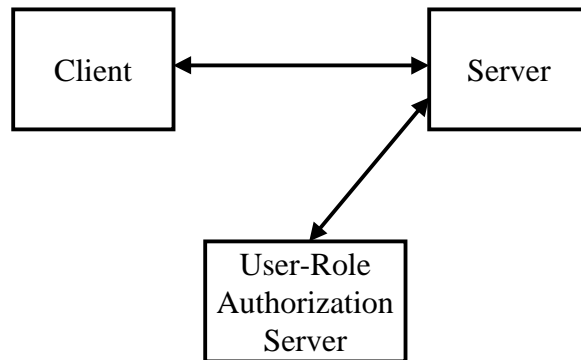
3

Figure 5
Server-Mirror User-Role Enforcement



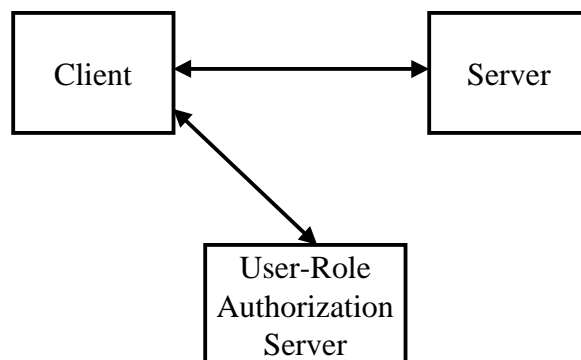
4

Figure 5
Server-Pull User-Role Enforcement



5

Figure 6
User-Pull User-Role Enforcement



6